



Samrat External Wall Cladding

www.samratcladage.com

Wall Cladding



Dictionary Meaning

A covering or coating on a structure or material.

Definition

Is an application of one material over another to provide a skin or a layer intended to control infiltration or for aesthetic purposes.

Wall Cladding



- Wall cladding is a non-structural covering installed over structural surfaces.
- It is composed of a variety of building materials and made to tolerate extreme weather conditions.
- While builders predominantly install wall cladding on exterior surfaces of buildings and structures, also use it to improve any interior surface.

Classification Of Wall Cladding



Based On Usage

External Wall Cladding

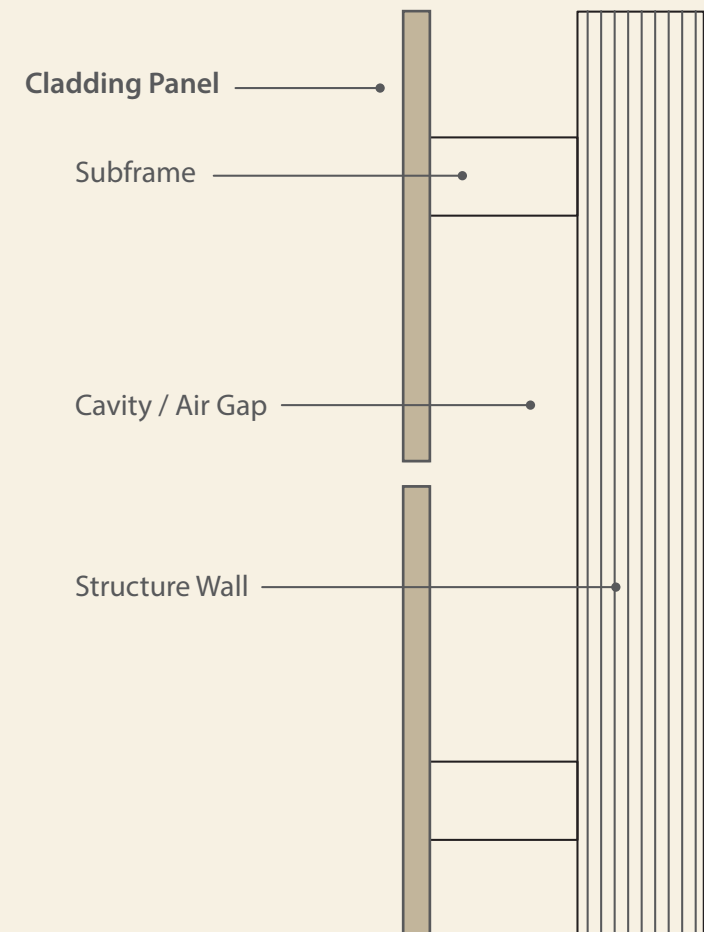
Internal Wall Cladding



Samrat External Wall Cladding

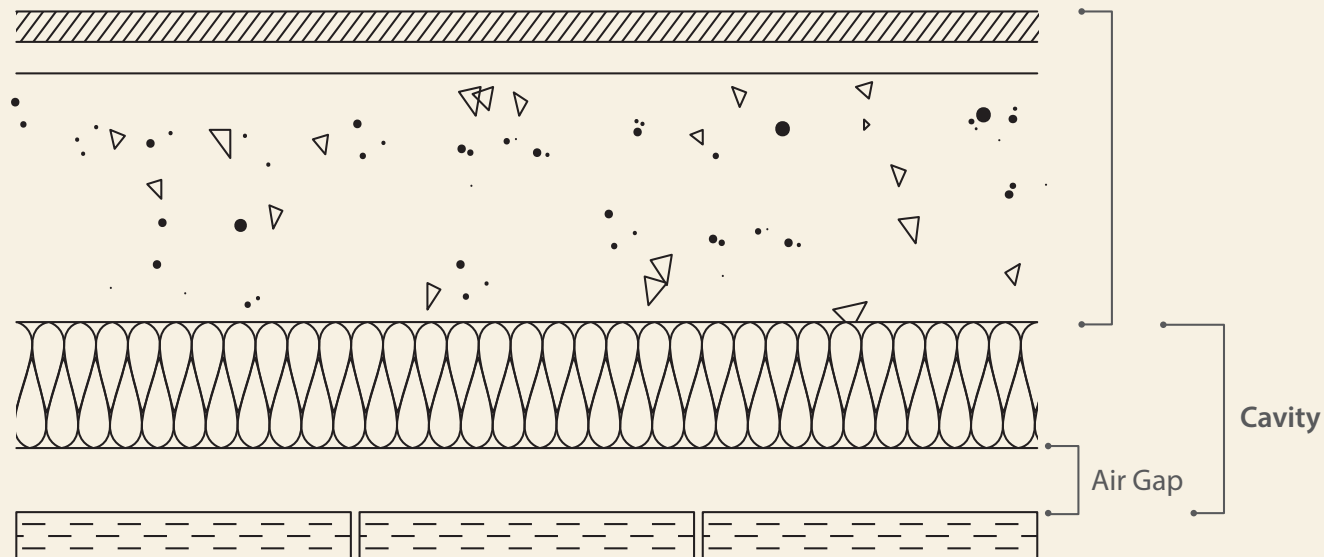
External / Rainscreen Cladding is the combination of:

- Outer Panel
- A Ventilated Cavity
- Support System



Cavity Gap

- Cavity gap between cladding panel and wall framing allows air to circulate with in the cavity.
- Allow easy water drainage.
- Permits water to move through the assembly.



Support System



- Aluminum or Stainless Steel structure to bear the load of Cladding Panel along with wind load.
- Use to give Cavity / Air Gap between Cladding Panel and structural Wall.

Why Choose Samrat External Wall Cladding



- Performance
- Weather Resistance
- Aesthetic
- Easy
- Safety
- Durability
- Graffiti Resistance
- Ready To Use Panels

Performance



- Maximizes the life of the Building.
- Stop building destroying elements to enter in the Building structure.
- Act as barrier of Wind, Rain and Sunlight.

Performance



Energy Efficient :

- Ideal ventilated air space between panel and building structure ensure proper circulation of heat & moisture through the cavity.
- Reduce heat transfer through the building structure.
- Control building interior temperature in different climate.

Aesthetic Appeal



- Suitable for both newly constructed as well as existing building.
- Uniform in Colour & Decor.
- Different shapes can be offered
- Ensure design freedom from architectural view.

Weather Resistance



UV Light Resistance :

- Highly resistance to UV rays that is found in sun light.
- Panels do not loose its original colour and hue in direct sunlight.

Resistance to climate shock :

- Does not suffer in extreme weather condition such as high temperature variations, rain etc.

Weather Resistance



Dimensional stability :

- Excellent dimensional stability under different climates conditions.

Easy ...

Replace :

- Reproduction of same color is possible , hence replacement with matching colour & decor is possible.
- Replacement of single / individual panel is possible.

Maintenance :

- Easy to clean : can be cleaned using a damp cloth or sponge and a mild soap or detergent.
- The panels do not attract dust.

Safety



Fire Performance :

- The surface do not produce toxic gases in case of fire.
- Panel as per EN 13501 – 1 with B S2 D0 classification when it reacts to fire.

Durability..



Abrasion Resistance :

Samrat External Wall Cladding has superior Abrasion & Wear Resistance, hence life of Samrat External Wall Cladding is far more than most of the other Wall Cladding Materials.

Scratch Resistance :

The Construction of Samrat External Wall Cladding provides better Scratch Resistance than most of the other Wall Cladding Materials thus the appearance of the building exterior looks new for longer period.

Durability..



Impact Resistance :

The Build of specially treated Kraft papers of Samrat External Wall Cladding gives better Impact Resistance, thereby protecting the surface so that it can withstand high impact on it.

Stain and Chemical Resistance :

Samrat External Wall Cladding is resistant to stain and show better results as compared to other Wall Cladding Materials.

Termite Resistance :

Samrat External Wall Cladding Panel does not attract termite and other harmful insects.

Graffiti Resistance



Graffiti Resistance :

Any writing marks made on the surface can be easily removed without damage to the panels characteristics or appearance , So maintenance cost of the Samrat Wall Cladding is very low comparatively other cladding material.

Ready To Use Panels



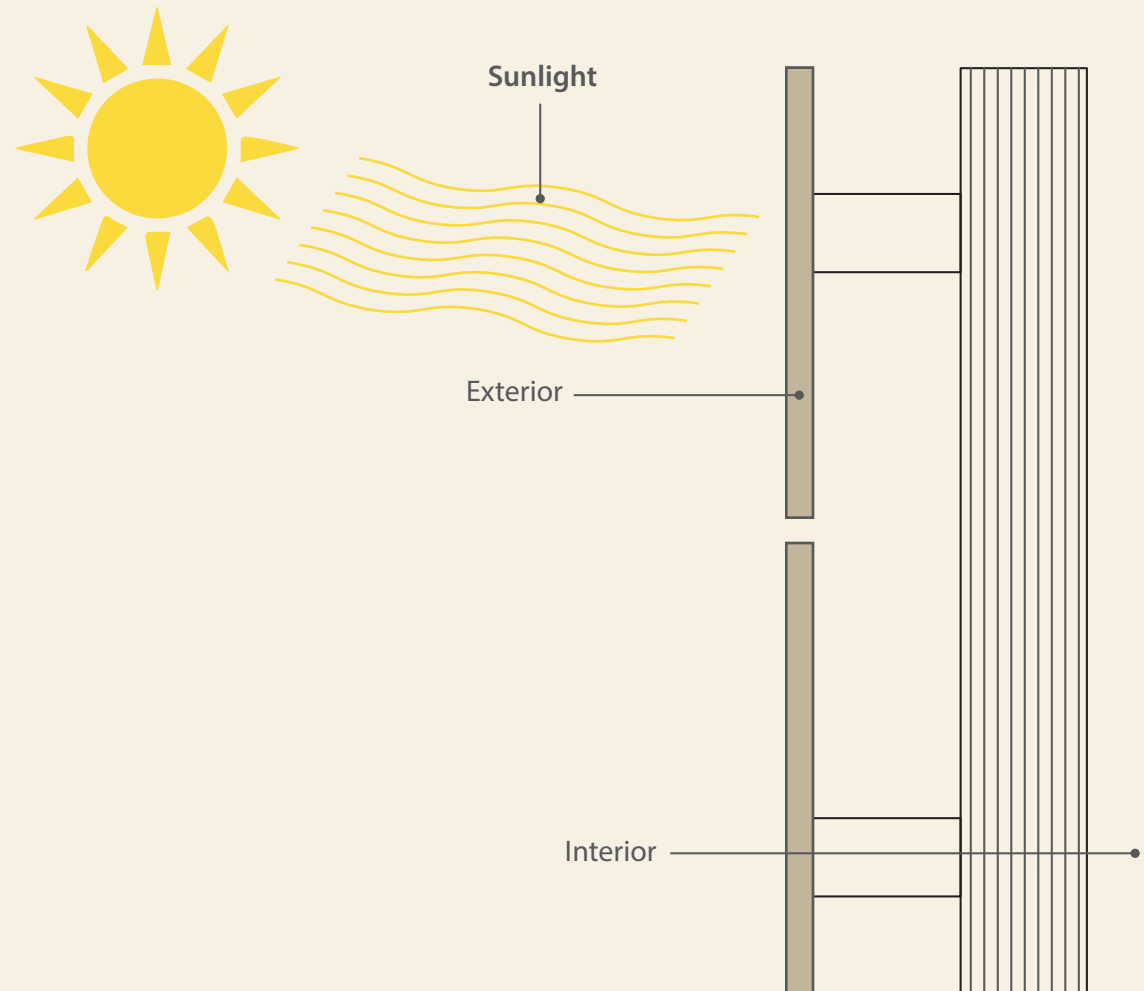
Ready To Use Panels

- **Aesthetics** : avoid chipping / neatly finished edges.
- **Time Management** : saves upon time especially in large project where timelines are most important.
- **Cost Effective**

How It Works ?

During Summers...

Hot Sunlight falls directly on to the cladding and not on structural wall ;so heat of sunlight does not transfer to the internal part of the building.

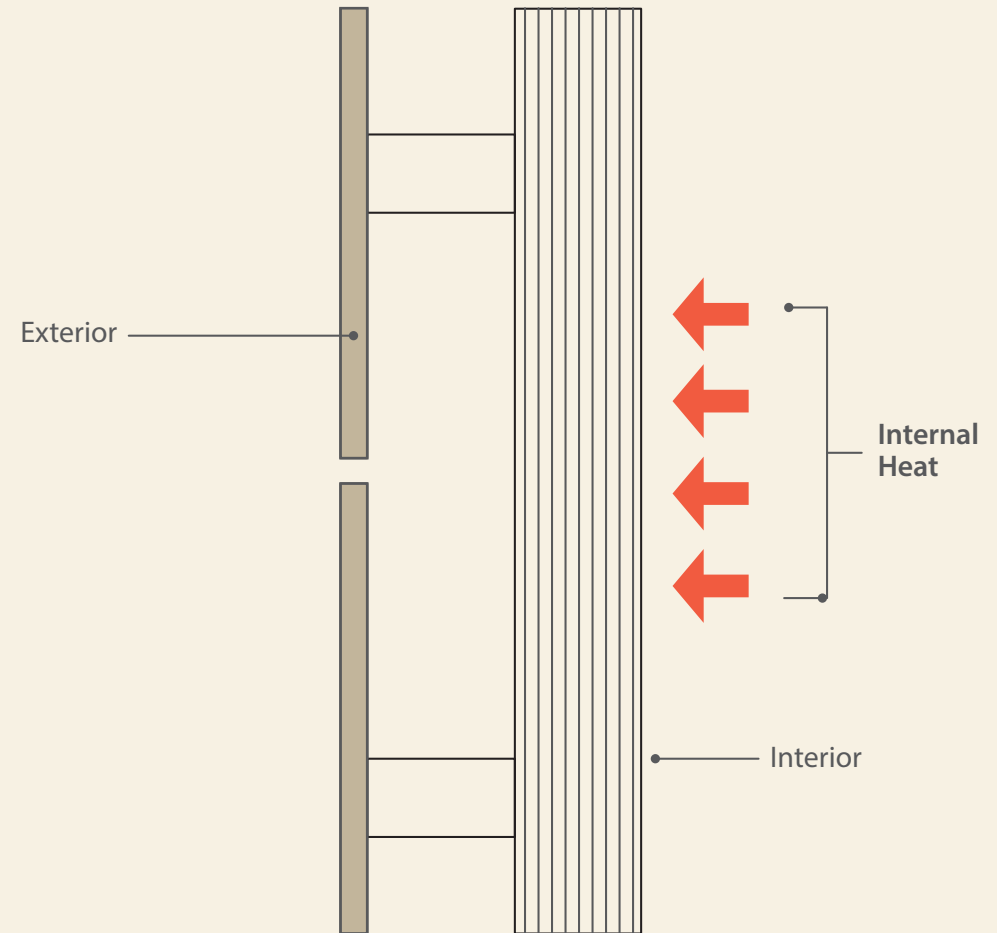


* Thermal Insulation Provide
Extra Protection if Installed

During Winters...

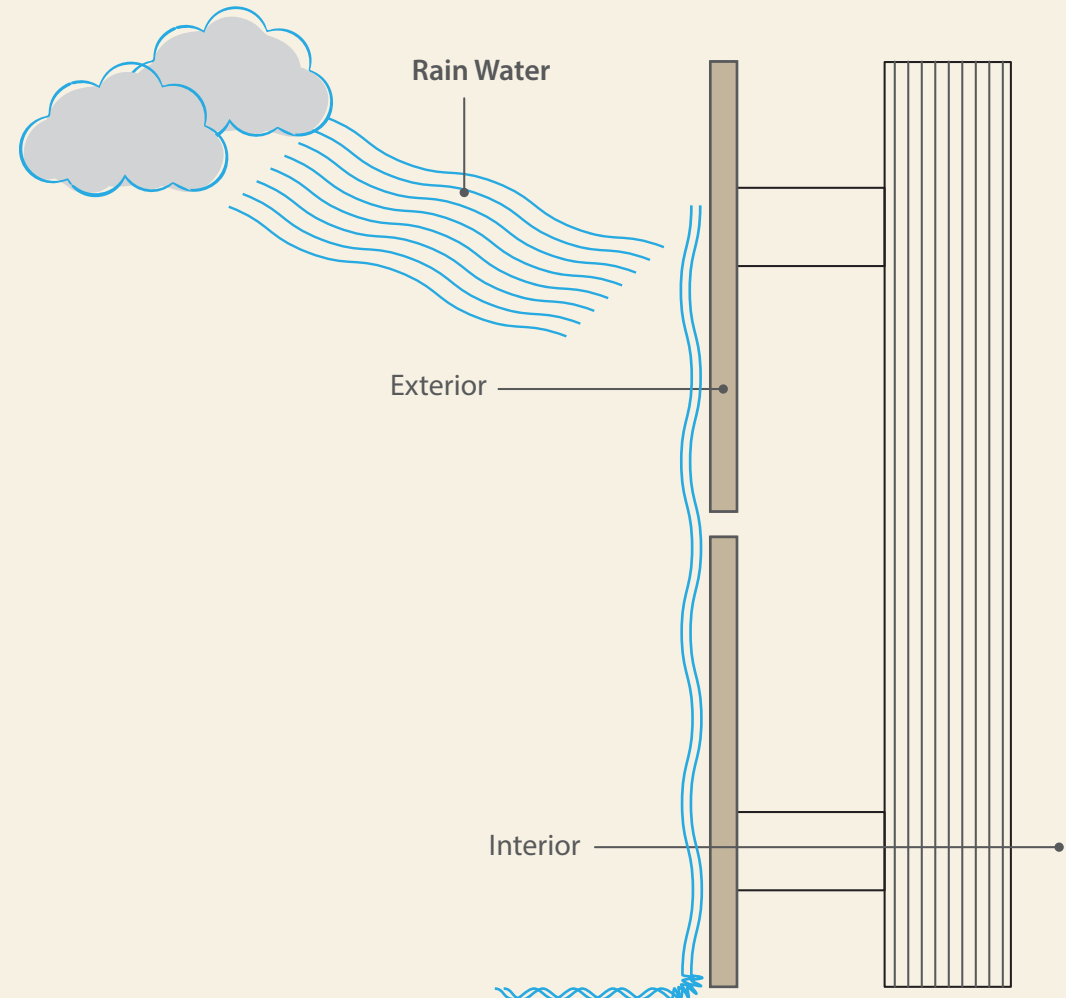
Internal heat of building do not transfer outside the building and outside cold do not enter in the building.

* Thermal Insulation Provide Extra Protection if Installed



During Rain...

Cladding stop the rain water to enter in the cladding system;
if some water enter through the joint /gap/ ventilation / air gap ;
it allows water to go out through the ventilation

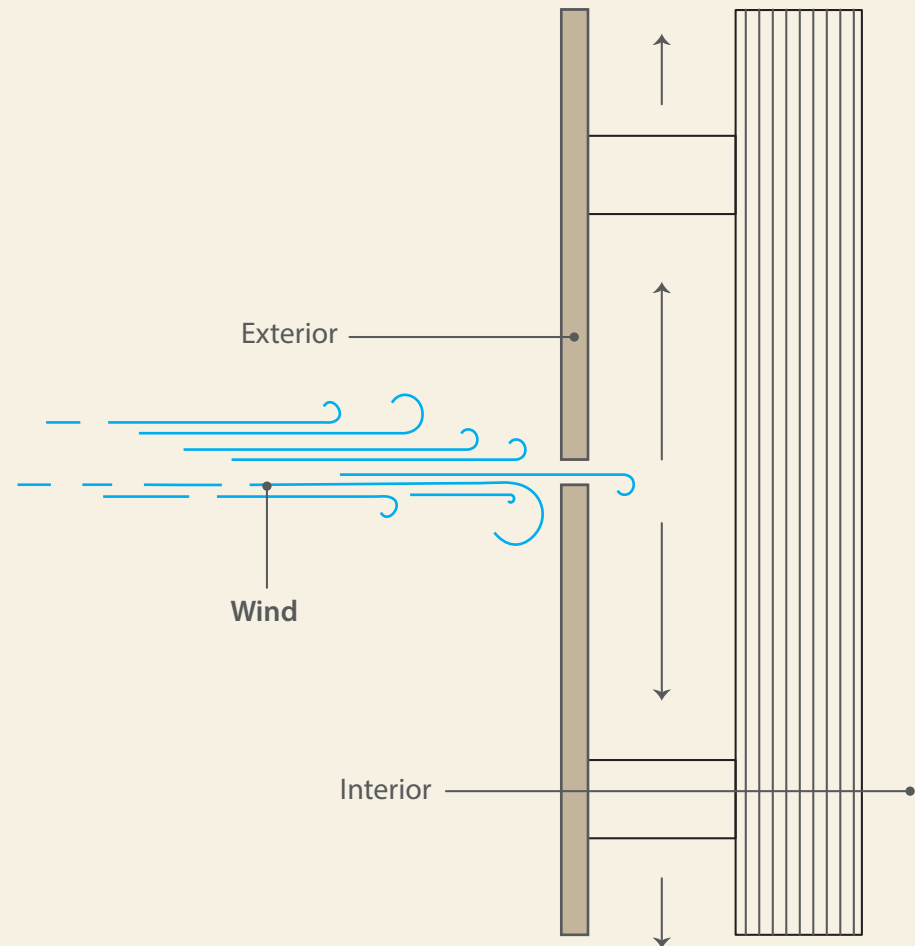


* Thermal Insulation Provide
Extra Protection if Installed

Wind Transfer

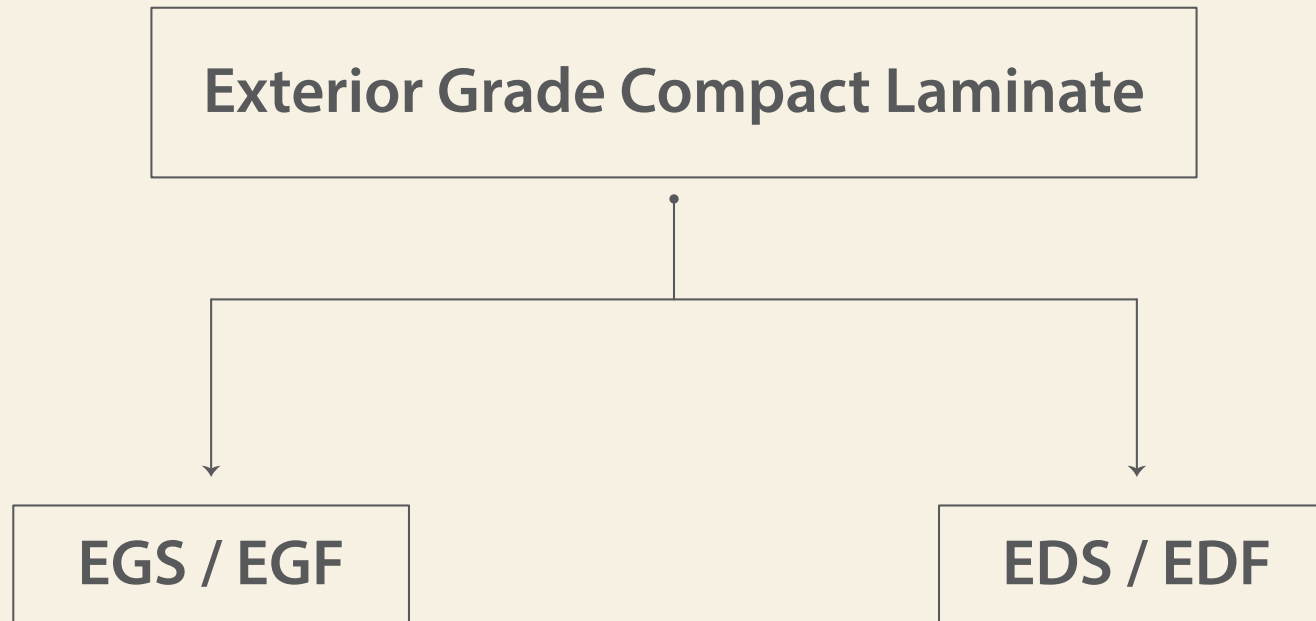


Cladding does not allow wind to flow from exterior to interior or interior to exterior



* Thermal Insulation Provide Extra Protection if Installed

Exterior Wall Cladding Type



Exterior Wall Cladding Type

As per EN 438 – 7

(1)

- **EGS** : Exterior General Purpose Standard Grade
- **EGF** : Exterior General Purpose FR Grade

(2)

- **EDS** : Exterior Severe Standard Grade
- **EDF** : Exterior Severe FR Grade.

Exterior Wall Cladding Type



EGS - (Exterior Grade, Moderate Use/ Standard) :

Thick, High performance materials meeting specified UV and weather resistance requirements, for general use in exterior cladding applications involving medium term exposure to average levels of sunlight and weathering.

Exterior Wall Cladding Type



EDS -(Exterior Grade , Severe Use, Standard) :

Thick, High performance materials meeting specified UV and weather resistance requirements, for general use in exterior ventilated façade applications involving long term exposure to strong sunlight and weathering

Samrat External Wall Cladding



Description	Characteristic
Number Of Decors	4
Thickness	6 mm / 8 mm
Sheet Size	8 ft by 4 ft
Surface Finish	Suede
Type	EDS / EDF



SAMRAT[®]

PLY | MICA | CLADDING

— Inspired by Nature —



Samrat Plywood Limited, 182/11, Industrial Area, Phase-I, Chandigarh 160002, India

T: +91 172 4690738, 4690742 | F: +91 172 2655621 | MB: +91 81959 60111 | E: admin@samratply.in

www.samratply.in, www.samratcladage.com

Follow us on 