



RIVET & SCREW FREE PANEL FIXING

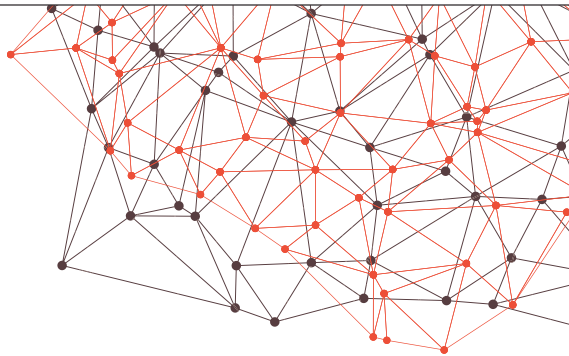
Samrat in cooperation with Dow Corning has designed a system for Elastic Bonding of ventilated facade panels for both interior and exterior applications.

After extensive research & testing, Dow Corning 896 PanelFix with a Tensile strength $> 1.1 \text{ Mpa}$, an elastic type one-component neutral curing silicone adhesive has been developed for bonding applications that require high durability and fast handling—provides instant bond strength after application and high strength adhesion once detailed lab trials gas approved Samrat Decorative panels for achieving excellent adhesion compatibility with its 896 Panel Fix

INSTRUCTION FOR APPLICATION



Thoroughly clean oil surface of loose debris. Wipe the joint surfaces and remove dirt & contaminants. Allow the surface to dry. Samrat recommends Dow Corning R40 Universal Cleaner or R41 cleaner Plus.



2. PRIMER APPLICATION



Apply a thin, uniform layer of primer by hand to the panel surfaces where the 896 PanelFIX adhesive will be applied. Samrat recommends Dow Corning Primer P.

3. PANEL FIXING

i. Pre Fixing - Tape application:



Once the cleaning and primer has been done and is dry, apply Dow Corning panelfix Tape continuously and vertically on to the supporting structure. Dow Corning Panelfix Tape, which is 12mm width, 3.2mm thick in Black Color is recommended to be used for the temporary fixation of the Facade Panels during the 896 panelfix Silicon Adhesive curing process. This will also ensure the minimum thickness of adhesive joint as achieved. Pre Fixing Tape provides instant tack and a temporary anchor that holds the panel in position while the silicon Adhesive 896 completely cures and reaches its final bond strength.

Do not remove the upper protective layer from the tape until the

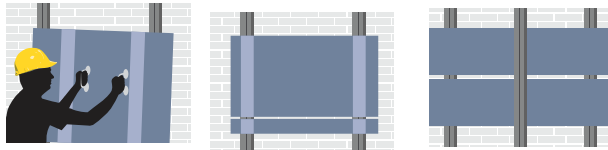
ii 896 Panelfix Adhesive Application :



After tape installation, apply the adhesive on to the supporting structure and also directly to the panel. Apply the adhesive in a continuous operation using a caulking gun, allowing a minimum of 5mm distance from the tape, Extrude the silicon Adhesive with minimal angle between of nozzle and the surface to achieve required joint dimensions.

** After the Silicon Adhesive application, remove the protective layer from the pre fixing tape.

iii Panel Installation:



Position the panel by gently pressing and correcting if necessary. Once in position, apply pressure to ensure that the panel fixing tape is in complete contact with the inner faces of both the panel & supporting structure.

